

# Make a Statement

Innovative Graphic Solutions for Marine Use



Designers, engineers and manufacturers alike turn to BCH Image for **creative graphic solutions** that consistently meet the quality demands and exacting specifications of marine applications.

Technical brilliance and inspired innovation are the hallmarks that set BCH Image apart. Together they have helped establish us as a trusted partner in creating outstanding brand image.

Our graphic solutions seamlessly integrate brand identities, design elements and visual themes across all components of boat design and decoration – interior, exterior and beyond.



# Interior Solutions

A World of Possibilities

Interior solutions from BCH open the door to a world of possibilities. They're a versatile, attractive and highly effective way to:

- 🔧 Enhance overall design
- 🔧 Build new model identity
- 🔧 Add value
- 🔧 Build continuity in color themes
- 🔧 Distinguish product from competitors
- 🔧 Add impact



1. Wrap Inks™



2. Alumi-Cal™



# Alumi-Cal™

Interior Applications

## *A Difference That's Distinctive*

Create richness, sophistication and a luxury appeal that is distinctively yours, to cockpits, components, instrument clusters, control panels and more. With Alumi-Cal the possibilities are virtually endless.



# Alumi-Cal™

Specifications and Test Results

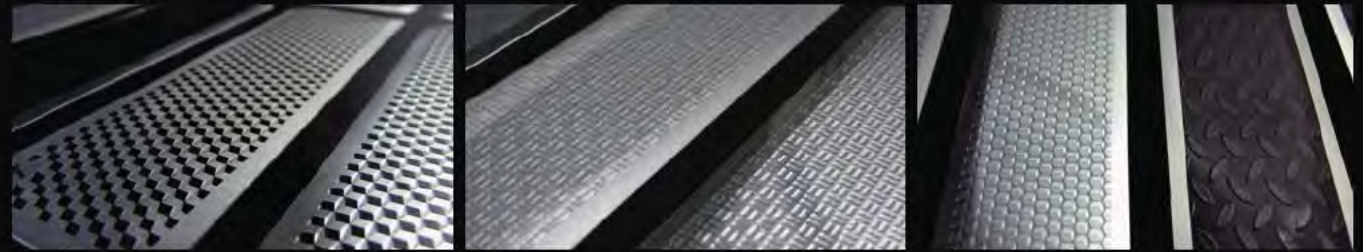
Get the handsome good looks and durability of aluminum in a transfer that offers a range of textures, superior flexibility and outstanding adherence. Create the look of engraving, embossing, textured metal, or colours that change with the angle or view. Combine colours and textures, finishes and effects and do it all with a material that will withstand solvents, abrasives, oil and temperatures as high as 150°C/300°F.

*Please note: images shown are samples only. We can reproduce any texture, color or engraving to suit design requirements.*

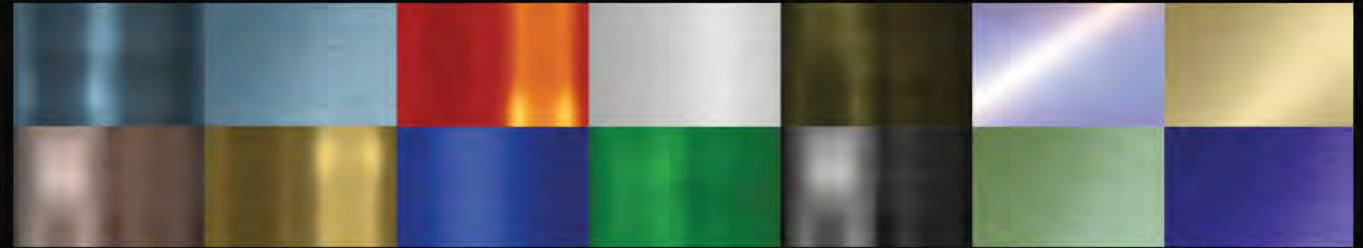
## Emboss



## Textures Effect



## Color



Tests	Description
Resistance to Solar Radiation (Xenon-Arc Type ASTM G26-93)	2000-hour exposure without any discoloration or cracking. Minimal loss of gloss (Gloss Evaluation ASTM D523). Minimal color difference (Color Evaluation ASTM D2244).
Resistance to Solvents	Exposure to various solvents (unleaded gasoline, super unleaded gasoline, synthetic oil, lubricants, and injection oil) without discoloration or cracking. Test includes a one-hour immersion in the subject solvent.
Resistance to Aging in a Salt Spray Bath (ASTM B117)	2000-hour exposure without any discoloration or cracking. Minimal loss of gloss (Gloss Evaluation ASTM D523). Minimal color difference (Color Evaluation ASTM D2244).
Resistance to Abrasion (ASTM D523)	20 passes of 400-grit sandpaper with a 200-gram weight. Minimal loss of gloss without any scratches.
Adhesion Tests	Peel tests are done on various types of surfaces in order to provide the right adhesive to the client.
Florida and Arizona Outdoor Exposure (SAE J1976 Feb. '94)	Outdoor weathering of exterior materials, procedure A. Exposure at 5 degrees south with or without backing.

## Standard Size Parameters

Nominal Thickness *	0.012" ± 0.030"
Maximum Size per Piece *	24" x 36"
Minimum Size per Piece *	1" x 1"
Minimum Exterior Radius	No limitation
Minimum Interior Radius	No limitation

\* Other sizes available upon request \*

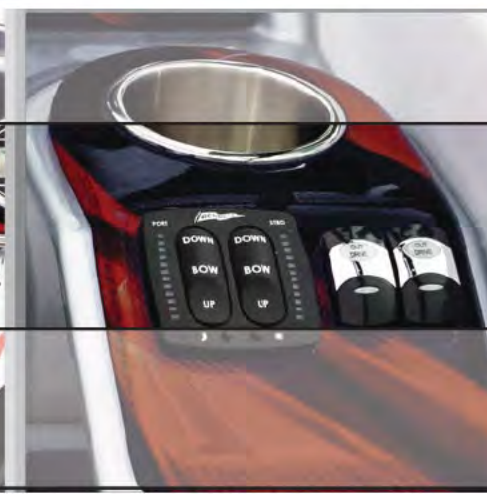
# Wrap Inks™

Interior Applications

## Take Brand Enhancement To a New Level

The powerful technology behind Wrap-Inks™ artfully integrates state-of-the-art graphics with polycarbonate and thermoforms them into a rugged, yet flexible material that's perfect for interior and exterior applications.

Now, it's possible to *customize a single component or an entire product line* - making each one unique - without lengthy production stages or the need for new molds.



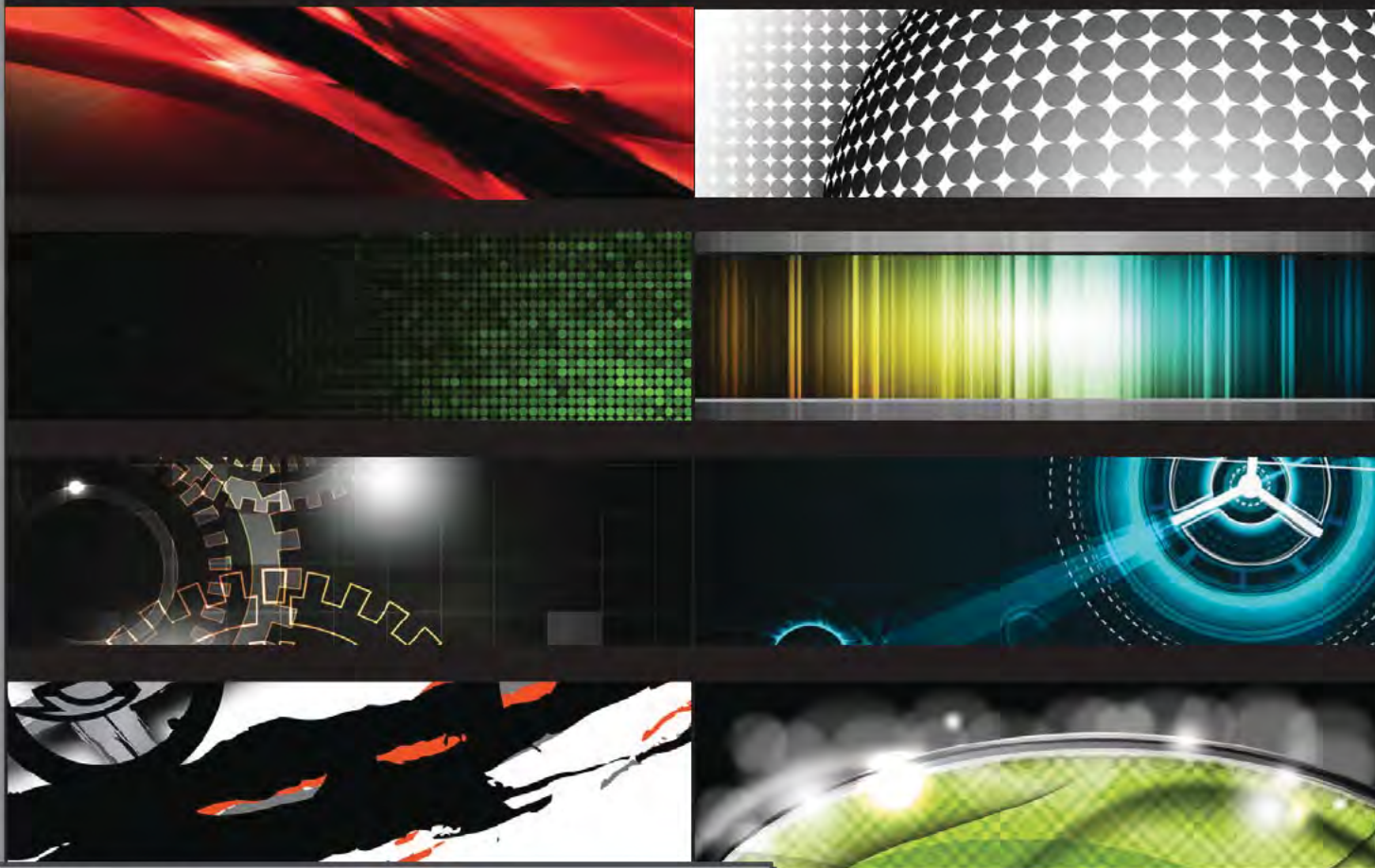
# Wrap Inks™

Specifications and Test Results

Add impact, excitement and unmistakable style with fully customized Wrap-Inks solutions. They're a high-quality way to *enhance overall designs, connect color themes, add new features or introduce new models.*

Please note: images shown are samples only. We can reproduce anything that can be screen printed and apply it to any type of surface.

Textures Effect Available



Tests	Description
Resistance to Solar Radiation (Xenon-Arc Type ASTM G26-93)	2000-hour exposure without any discoloration or cracking. Minimal loss of gloss (Gloss Evaluation ASTM D523). Minimal color difference (Color Evaluation ASTM D2244).
Resistance to Retraction and Expansion	Exposure to a wide range of temperatures (-40° C to 93° C) to verify adhesion to various types of surfaces, such as gel coat and fiberglass.
Resistance to Solvents	*Varies depending of the material used. Additional information available upon request.
Resistance to Aging in a Salt Spray Bath (ASTM B117)	2000-hour exposure without any discoloration or cracking. Minimal loss of gloss (Gloss Evaluation ASTM D523). Minimal color difference (Color Evaluation ASTM D2244).
Resistance to Abrasion (ASTM D523)	28 delta haze (using ASTM D1044).
Ink Adhesion Tests	0% of area removed: 5B classification using a cross-cut tape test (ASTM D3359).
Florida and Arizona Outdoor Exposure (SAE J1976 Feb. '94)	Outdoor weathering of exterior materials, procedure A. Exposure at 5 degrees south with or without backing.

## Standard Size Parameters

Nominal Thickness *	0.02" ± 0.125"
Maximum Size per Piece *	29" x 24"
Minimum Size per Piece *	1" x 1"
Minimum Exterior Radius	No limitation
Minimum Interior Radius	No limitation

\* Other sizes available upon request \*

# Wrap Inks™

Exterior Solutions

## *Precision Messaging*

Exterior solutions not only adhere to curved or complex surfaces, they can be finished in multiple textures, a range of colours, in metallic or non-metallic, with simple or complex part profiles.

These new BCH exterior solutions:

- 🌀 *Add outstanding visual appeal*
- 🌀 *Emphasize new features*
- 🌀 *Integrate seamlessly with design themes*
- 🌀 *Increase brand visibility*
- 🌀 *Add perspective through dimensional effects*
- 🌀 *Enhance overall product appeal*





# Wrap Inks™

Exterior Applications

## *The Only Limit is Your Imagination*

Take a bold new step. Wrap-Inks deliver the next generation of visual product branding:

- ❶ *Engineered and manufactured by BCH precisely to your specifications*
- ❷ *Leading edge technology that delivers striking visual effects*
- ❸ *State-of-the-art image and graphic quality*
- ❹ *Fully customized colors and effects with a varying levels of diffusion and gloss*
- ❺ *Excellent UV, saltwater and shock resistance, thanks to rugged, flexible polycarbonate*



# Identification Solutions

A New Dimension in Branding

BCH Image works hand-in-hand with brand owners to deliver innovative corporate identity solutions that achieve superior visibility while maintaining quality results. Our manufacturing flexibility and expertise allow us to produce quality, cost-effective, cutting-edge designs that will meet the most demanding specifications and the highest expectations.

1. Flat Decal
2. Thermo-Cal®



# Identification Solutions

A New Dimension in Branding

## **Opti-D-Cal®**

*Domed Resin Decals That Stand the Test of Time*

Add your own distinct identity with a self-adhesive, transparent resin decal that delivers sophisticated optical properties.

## **Thermo-Cal®**

*3-D Chrome as You've Only Imagined It*

The unique alternative to injection-molding. Logos, lettering and more in chrome, metallic, black and more. All with 3-dimensional impact that can be recessed, arched, beveled or stacked.

## **Alumi-Cal™**

*To show off your brand in a different light*

The aluminum provides a very rich look thanks to the texture of the grain and the matte appearance of the material.



Alumi-Cal™



Thermo-Cal®



Opti-D-Cal®



Thermo-Cal®

# Our Accomplishments

A New Dimension in Branding

*BCH Image technology and imagination are at home across a range of industries. We're proud to share these examples of our accomplishments.*

## Recreational Products



Alumi-Cal™

*ski-doo*



Thermo-Cal®

## Cosmetics



Alumi-Cal™ combined with Opti-D-Cal®

## Automotive Industry



HYUNDAI

Thermo-Cal®